

HC-4EB-VF-SA



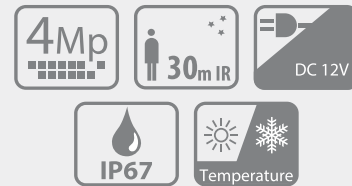
4MP HD-over-coax IR Eyeball Camera System Overview



Experience superior 4MP video and the simplicity of reusing existing coaxial infrastructure with HD-over-coax. The Lite series 4MP HD-over-coax camera features a compact design and offers a high quality image with rich details at a friendly price. It offers various vari-focal/fixed lens models with a multi-language OSD and HD/SD switchable output. Its structural flexibility and high cost-performance makes the camera an ideal choice for SMB solutions.

Features

- ▶ Max 30fps@4MP
- ▶ HD and SD output switchable
- ▶ 2.7-13.5mm vari-focal lens
- ▶ Max. IR length 30m, Smart IR
- ▶ IP67, DC12V



Functions

4 Signals over 1 Coaxial Cable

HD-over-Coax technology supports 4 signals to be transmitted over 1 coaxial cable simultaneously, i.e. video, audio*, data and power. Dual-way data transmission allows the HD-over-Coax camera to interact with the HCVR, such as sending control signal or triggering alarm. Moreover, HD-over-Coax technology supports PoC for construction flexibility.

* Audio input is available for some models of HD-over-Coax cameras.

Long Distance Transmission

HD-over-Coax technology guarantees real-time transmission at long distance without any loss. It supports up to 800m(1080P)/1200m(720P) transmission via coaxial cable, and up to 300m(1080P)/450m(720P) via UTP cable.*

*Actual results verified by real-scene testing in Unisight's test laboratory.

Simplicity

HD-over-Coax technology inherits the born feature of simplicity from traditional analog surveillance system, making itself a best choice for investment protection. HD-over-Coax system can seamlessly upgrade the traditional analog system without replacing existing coaxial cabling. The plug and play approach enables full HD video surveillance without the hassle of configuring a network.

Smart IR

The camera is designed with microcrystalline LED IR illumination for best lowlight performance. Smart IR is a technology to ensure brightness uniformity in B/W image under low illumination. The unique Smart IR adjusts to the intensity of camera's infrared LEDs to compensate for the distance of an object, and prevents IR LEDs from overexposing images as the object come closer to the camera.

Multi-formats

The camera supports multiple video formats including HDCVI, CVBS and other two common HD analog formats in the market. The four formats can be switched over through OSD menu or by PFM820(UTC controller). This feature makes the camera to be compatible with not only HCVRs but also most end users' existing HD/SD DVRs.

Multi-language OSD

OSD menu provides multiple image adjustments and function settings to meet the requirements of different monitoring scenes. The OSD menu includes configurations such as backlight mode, day/night, white balance, privacy mask and motion detect. The camera supports 11 languages for OSD menu, namely, Chinese, English, French, German, Spanish, Portuguese, Italian, Japanese, Korean, Russian and Polish.

5X Optical Zoom

With the adoption of 2.7-13.5mm vari-focal lens, the camera allows 5X optical zoom, better adapting the requirements under various monitoring scenes. The camera is able to cover a wider angle of view range at the wide end and is suitable for monitoring the faraway objects at the tele end.

Large Aperture Lens

The camera adopts F1.3 large aperture lens. With higher amount of absorbed light, the camera presents an impressive lowlight performance.

Protection

The camera's outstanding reliability is unsurpassed due to its rugged design. The camera is protected against water and dust with IP67 ranking, making it suitable for indoor or outdoor environments. Supporting $\pm 25\%$ input voltage tolerance, this camera suits even the most unstable power supply conditions. Its 4KV lightning rating provides protection against the camera and its structure from the effects of lightning.

HC-4EB-VF-SA



Technical Specification			
Camera			
Image Sensor	1/3" CMOS		
Effective Pixels	2688(H)×1520(V), 4.1MP		
Scanning System	Progressive		
Electronic Shutter Speed	PAL: 1/25~1/100000s NTSC: 1/30~1/100000s		
Minimum Illumination	0.03Lux/F1.3, 30IRE, 0Lux IR on		
S/N Ratio	More than 65dB		
IR Distance	Up to 30m (98feet)		
IR On/Off Control	Auto / Manual		
IR LEDs	20		
Lens			
Lens Type	Vari-focal lens / Fixed Iris		
Mount Type	Board-in		
Focal Length	2.7-13.5mm		
Max Aperture	F1.3		
Angle of View	H: 98°~26°		
Focus Control	Manual		
Close Focus Distance	200mm 7.87"		
DORI Distance			
Note: The DORI distance is a "general proximity" of distance which makes it easy to pinpoint the right camera for your needs. The DORI distance is calculated based on sensor specification and lab test result according to EN 62676-4 which defines the criteria for Detect, Observe, Recognize and Identify respectively.			
	DORI Definition	Distance	
		Wide	Tele
Detect	25px/m (8px/ft)	64m(210ft)	222m(728ft)
Observe	63px/m (19px/ft)	26m(84ft)	89m(291ft)
Recognize	125px/m (38px/ft)	13m(42ft)	44m(146ft)
Identify	250ppm (76px/ft)	6m(21ft)	22m(73ft)
Pan / Tilt / Rotation			
Pan/Tilt/Rotation	Pan: 0° ~ 360° Tilt: 0° ~ 90° Rotation: 0° ~ 360°		
Video			
Resolution	4MP (2560×1440)		
Frame Rate	25/30fps@4MP, 25/30fps@1080P, 25/30fps@720P		
Video Output	1-channel BNC HDCVI high definition video output / CVBS video output (Can switch)		

Day/Night	Auto (ICR) / Manual
OSD Menu	Multi-language
BLC Mode	BLC / HLC / DWDR
WDR	DWDR
Gain Control	AGC
Noise Reduction	2D
White Balance	Auto / Manual
Smart IR	Auto / Manual

Certifications

Certifications	CE (EN55032, EN55024, EN50130-4) FCC (CFR 47 FCC Part 15 subpartB, ANSI C63.4-2014) UL (UL60950-1+CAN/CSA C22.2 No.60950-1)
----------------	---

Interface

Audio Interface	N/A
-----------------	-----

Electrical

Power Supply	12V DC ±25%
Power Consumption	Max 4.6W (12V DC, IR on)

Environmental

Operating Conditions	-40°C ~ +60°C (-40°F ~ +140°F) / Less than 90% RH * Start up should be done at above -40°C (-40°F)
Storage Conditions	-40°C ~ +60°C (-40°F ~ +140°F) / Less than 90% RH
Ingress Protection & Vandal Resistance	IP67

Construction

Casing	Aluminium
Dimensions	Φ119mm×97.4mm (Φ4.69"×3.83")
Net Weight	0.56kg (1.23lb)
Gross Weight	0.69kg (1.52lb)

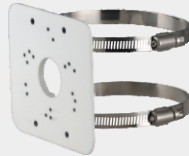
HC-4EB-VF-SA



Accessories (optional)



PFA13B
Junction Box



PFA152-E
Pole Mount



PFB204W
Wall Mount



PFM800-E
Passive
HD-over-Coax Balun



PFM800-4MP
Passive
HD-over-Coax Balun



PFM801-4MP
Passive
HD-over-Coax
Balun with Power



PFM321
12V/1A
Power Adapter



PFM320D-015
Power Adapter

Dimensions(mm/inch)

